

SAINT JOHN'S  
EPISTLE  
FEBRUARY 2016

*St. John's Evangelical Lutheran Church*

P.O. BOX 270, BERRYSBURG, PA 17005  
The Rev. Thomas G. Bruner, Jr., Pastor

Dear Friends in Jesus,

As you hopefully already know, one of the three teams that grew out of our Prayerful Planning Group has been working very hard for some time now to develop a plan that would enable us to do all of the preparation for our annual Strawberry Festival here on site, in our grove pavilion. This would both relieve the burden that has fallen so heavily for so many years on Henry & Lorraine Henninger's aging shop facilities and end the inefficiencies that result from doing things at multiple locations and moving supplies back and forth. Using monies that were donated specifically for this purpose, we have contracted with J. H. Rissinger & Sons to begin the work of modifying the pavilion structure itself. They have already added two concrete pads, one on the north side of the existing pavilion kitchen where a walk-in cooler is to be placed and the other on the east end of the pavilion which for now will serve as expanded Festival "patio" seating for those with special needs but which has also been designed "to code" so that it could serve as the foundation for a possible future pavilion expansion.

After analyzing all of the equipment that will be needed in a modified pavilion kitchen, the design team has determined that the final total cost of the project will probably approach \$60,000. Since a bit more than \$30,000 has already been donated toward this cost, we find ourselves with a bit less than \$30,000 to go. The team has also determined that, if needed, we can easily take up to \$12,000 from the Local Benevolence/Bicentennial/Strawberry Festival Fund toward this \$30,000 need, thus using a small portion of the proceeds of past Strawberry Festivals as an investment in future Festivals. This still leaves a minimum of \$18,000 which will be needed in additional gifts. Obviously, if more than the minimum \$18,000 is raised, we will then be able to take less than \$12,000 from the Fund.

If you would like to make a gift toward the pavilion project, all you need do is write a check payable to "St. John Lutheran Church", making the notation "Pavilion Project" on the memo line. Please place your check in a plain envelope that is also marked "Pavilion Project" and which includes your offering envelope number if you would like your gift to appear on your annual giving statement. You can then either give that envelope directly to Lorraine Henninger (the treasurer of the Memorial Fund, through which project monies are being routed) or mail it here to the church at PO Box 270, Berrysburg, PA 17005-0270, whichever is easiest for you.

We are planning that the project will be completed and everything fully up and running in time to prepare for this year's Festival, which is coming up on June 15. It is worth noting that, in addition to the benefits of doing everything here on site that I mention above, our improved facilities will also allow us to serve our food in a more controlled and sanitary setting, in line with the ever-more-stringent regulations and expectations of public health authorities.

Thank you for your help in assuring the long-term viability of the Strawberry Festival, our signature event, by which we both welcome and serve our community!

*Pastor Tom*

PS Before I close, I want to join with Ann and Dan and Tim in thanking you, our congregational family, for the many expressions of love we received during the Christmas and Advent seasons. Your kind words, your cards, your gifts and, of course, the congregational gift were truly sources of great joy for us. We are indeed blessed as we approach sixteen years of life and ministry together with you here on "The Hill"!

PPS Please read on for a complete schedule of Midweek Lenten Worship. Ash Wednesday is coming right up on February 10!!

## ASH WEDNESDAY & MIDWEEK LENTEN WORSHIP SCHEDULE

This is truly one of those years where we no sooner take away the last greenery of Christmas than we are bringing in the rugged cross of Lent! We will observe a very early **Ash Wednesday**, the traditional beginning of the Season of Lent, on **February 10 at 7:00 P.M.** with a Liturgy of Holy Communion, including the optional imposition of ashes. Those desiring to receive the mark of a cross, traced in ashes on their forehead, will come forward at the appropriate time in the worship, much as we come forward to receive Holy Communion. As is traditional here at St. John, those communing will have the option of receiving the wine from the common cup.

Then, on subsequent Wednesday evenings during Lent, the Lutheran, United Church of Christ, and United Methodist congregations of the Berrysburg and Elizabethtown area will again join together for a light supper and worship. The supper, consisting of simple items like soup and sandwiches, will begin at **6:15 P.M.** Following supper, at **7:15 P.M.**, we will join in worship. Worship will end by approximately 8:00 P.M. Once again this year, the host pastor of each congregation will lead the worship, while the pastors will each take turns preaching in a congregation other than their own. Our theme for this year's Lenten series will be *From Jonah to Jesus*, a look at how the Old Testament Book of Jonah and the experiences of its namesake prophet point forward to and foreshadow Jesus' own life, death, and resurrection. The details for these Wednesday evenings are as follows:

<u>Date</u>	<u>Host Congregation</u>	<u>Preacher/Topic</u>
February 17	<i>St. John</i>	Rev. James Lewis "Jonah's Time in the Belly of the Fish & Jesus' Descent into Hell"
February 24	Trinity United Methodist Church Elizabethtown	<i>Pastor Tom</i> "Jonah's Experience with the Plant and the Worm & the Withering of the Old Tradition in Jesus' Ministry"
March 2	Peace United Church of Christ Berrysburg	Rev. Ray Holland "Jonah on the Ship/the Calming of the Storm & the Cross of Jesus"
March 9	Salem Lutheran Church Elizabethtown	Rev. Jeff Wagner "Jonah's 40 Days in Nineveh & Jesus' Preaching to the Gentiles"
March 16	Salem United Church of Christ Elizabethtown	Rev. Nathan Minnich "The Fish Releases Jonah & Jesus' Resurrection"

Please don't miss these opportunities to have your faith refreshed and deepened, as we journey together through the Season of Lent. May God bless us as we once again make our way along this pathway that leads to the Cross!

## SUMMER CHURCH CAMPING IS JUST AROUND THE CORNER!

Even though it is still winter, brochures and registration forms have already begun arriving for summer camping experiences at Mt. Luther, Nawakwa and Kirchenwald. Please don't forget that camping experiences are available for all ages and for all tastes in comfort. For St. John members who attend a camping experience, our Sunday School will pay a portion of the registration fee, making an already affordable experience that much more of a bargain!

## A SWEET TIME FOR ALL

Our Annual Sweetheart Banquet will be held on a new day and at a new time in order to hopefully avoid the weather issues that have plagued so many of our recent Banquets – *Sunday, February 7, following morning worship*. The price for this wonderful time of fellowship, food, and entertainment is once again just \$15 per person, and you do not have to be part of a couple to attend. Please sign up on the big red heart on the foyer bulletin board and give your payment to Pat Herb as soon as possible!

## BOOK DISCUSSIONS

We had a great time discussing our most recent book pick – Firstlight, by Sue Monk Kidd. It was also our first time gathering over soup and goodies, and they were wonderful! Our next two discussions will be in the same format, and in February we will be discussing a second book by Sue Monk Kidd because the first book was such a hit! Everyone is welcome, and spouses and family are encouraged to stay and eat, too. Please speak with Ann Bruner if you have questions. Here are our books and schedule for the next few months:

February 14, noon:

Soup and sides immediately following church  
*When the Heart Waits*, by Sue Monk Kidd

March 13, noon:

Soup and sides immediately following church  
*A Circle of Quiet*, by Madeleine L'Engle

April meeting:

Book and movie

Time and location TBD      Even if you haven't attended before, please join us!

## PLEASE HELP!

As we begin a new year, please be sure that, if you are a communing member of St. John, you turn in at least one communion record card this year. (If during the year you live and worship out of the area, or if you commune even once at another congregation, please be sure to have that congregation send notice to Pastor Tom.) If you are a contributing member of St. John, please be sure that you use your offering envelopes at least once this year, so that you are on record as having made a contribution. Please do your part to make sure that our parish records are as accurate as possible!

## ANNUAL CONGREGATIONAL MEETING, PART ONE

The first part of our Annual Congregational Meeting was held on Sunday, December 13, following worship. At that meeting, a 2016 Current Fund Budget was adopted which totals \$146,083 – a 3.4% increase from the 2015 Budget. Please bear this increase in mind as you plan your giving in 2016 – being, for instance, an increase of about \$1.35 on a gift of \$40. Our adopted synodical benevolence figure of \$12,000 was unchanged from 2015, but this does not reflect actual giving, which has exceeded this amount by a good margin for the past several years. In elections for our Congregational Council, the following persons were elected to a three-year term: Jeffrey Buffington, Carl Baumgardner, Jamie Doyle, and Karen Paulman. We thank these newly-elected Council members, as well as the outgoing members whom they replace—Ken Koller, Sandra Shade, and Cheryl Shadle!

## CONGREGATIONAL OFFICERS ELECTED

Congratulations to the following persons who, on January 10, were re-elected as our congregational officers for 2016: President – Roy Henry, Vice President – Jeffrey Lehman, Secretary – Sandra Lamenza, Current Fund Treasurer – Lorraine Henninger, Benevolence Fund Treasurer – Tamara Spicher, Improvement Fund Treasurer – Dale Hassinger, and Financial Secretary – Pat Herb. We thank these folks for their service throughout the coming year!

## NEWS FROM ST. JOHNS WOMEN OF THE ELCA

At our meeting we decided to do some mission work through the Presidents Meeting in February in Chicago. We will be giving our Synodical President Joyce Ray four gift cards from Walmart to take to that meeting. These cards will help women who deal with Sex Trafficking to improve their life style.

Ladies please remember to work on our Prayer Shawl Project. Also the ladies are back working on the quilts again after the holidays. If you can help in any way please contact Pat Herb or Fay Nichols. The ladies meet on Wednesday mornings at 9:00.

Our ladies at St John are to be commended for the work they have done on the quilts and all of you for your help in the donations you have given to send the quilts where they are needed. The Ladies have another "Quilting Brick at Inner Harbor" for their work. Congratulations to all!!!

Our next meeting will be on February 10, 2016 at 2:00 PM in the Fellowship Hall. The leaders will be Fay Nichols and Kris Mac Cready.

## PASTORAL ACTS

### At Graveside

Pastor Tom presided at funeral worship for Dolly Ferree, mother of John Ferree, following her death at Harrisburg Hospital on December 10. Worship was held at the church on December 14, with burial following in our church cemetery. Please pray that the promise of the Resurrection to Eternal Life may guide and sustain John and his family!

WORLD HUNGER UPDATE 11-15-15!. YOUR IN GATHERING OFFERINGS FOR OCTOBER, 2015 FINAL TALLY WAS \$1995.00 WITH ANOTHER \$500.00 FROM THRIVENT PRODUCED \$2495.00

Our theme started in 2011 was continued as *God's Global Barnyard*.

The following children and youth were present after church. Kinsley Schreffler, Gracie Gehring, Gabe Gehring, R.J. Henry and Cole Roadcap.

We had a good discussion with many options on just what should be purchased. We settled on 13 pigs at \$30.00 each, 1 Cow for \$500.00, 10 Goats at \$50.00 each, 13 Chicks at \$10.00 per flock, 5 Sheep at \$125.00 each, 1 Fish farm at \$250.00 and 5 Honey Bee Hives at \$20.00 each. Total Purchases were \$2495.00, were forwarded to ELCA for implementation were most needed in the world.

We will never know the final results of ST' John's actions but maybe 47 families and 1 fish cooperative will be helped by your efforts in 2015.

O Jesus by your loving spirit, enable us to be doers of your word. Amen

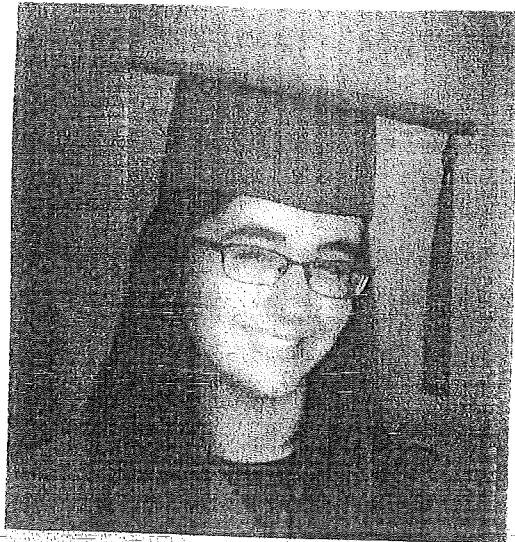
Thank you so much by your generosity and may God continue to bless our church families during the new year of 2016.

Your World Hunger Coordinators,

Fay Nichols and Larry Gessner

---

*Note from Pastor Tom: It is always interesting and inspiring to read about the accomplishments of our younger congregational members and those young persons who are related to our congregational family. Proud Grandpa Larry Gessner wanted to share the following article about his granddaughter, Emily, who is an occasional visitor with us on Sunday mornings. Please consider this also a reminder that I/we would welcome other similar articles about your young person(s)!*



Emily Halpern of Lansdale, Pa., daughter of Rich and Anita (Gessner) Halpern and granddaughter of Larry and Mary Gessner of Berrysburg and Stanley and Bernice Halpern of Philadelphia, has been recognized as a National Merit Scholarship semi-finalist and as an AP (Advanced Placement) Scholar. Emily will graduate from North Penn School district high in June 2016 and plans to pursue a degree in forensic science when she attends college in the fall.

The National Merit Scholarship Program is an academic competition for recognition and scholarships that began in 1955. High school students enter the National Merit Program by taking the preliminary SAT/National Merit Scholarship Qualifying Test in October of their junior year. In October 2014, 1.4 million students took PSAT/NMSQT. In the entire country, 16,000 students are named semi-finalists. Semifinalists represent less than one percent of the country's high school seniors. Semifinalists are selected based on the ability to show exceptional academic talent and potential for success in rigorous college studies.

Earning an AP Scholar award is a significant accomplishment based on scores achieved from AP testing in high school. Some colleges apply AP scores toward college credit. Emily is now part of a unique group of students worldwide who have successfully completed a rigorous series of college-level courses and exams.



**WORSHIP SERVICES FOR FEBRUARY 2016**

Altar Guild for the Month of February

Ginny and Delmar Enders

Lector for the Month of February

Carol Hassinger

Ushers for the Month of February (L) Carl Baumgardner, (E) Joseph Doyle, Ken Koller & Louise Baumgardner

**FEBRUARY 7, 2016**

Transfiguration of Our Lord  
*Holy Communion*

Sunday School Superintendent-  
Sunday School Pianist-  
Greeters-  
Acolytes-

Jeff Lehman  
Louise Baumgardner  
The Lehman Family  
Owen Mattern & Cameron Thompson

**FEBRUARY 10, 2016**

Ash Wednesday 7:00 P.M.  
Holy Communion

Greeters-  
Acolytes-

Ronald & Bonnie Erb  
Gabe & Gracie Gehring

**FEBRUARY 14, 2016**

The First Sunday in Lent

Sunday School Superintendent-  
Sunday School Pianist-  
Greeters-  
Acolytes-

Ken Koller  
Sandy Paul  
John & Judy Ferree  
Aidan Roadcap & Eli Conte

**FEBRUARY 17, 2015**

Community Lenten Supper & Worship 6:15

**Greeters Needed**

**FEBRUARY 21, 2016**

The Second Sunday in Lent

Sunday School Superintendent-  
Sunday School Pianist-  
Greeters-  
Acolytes-

Roy Henry  
Carol Hubler  
Delmar & Ginny Enders  
Kelsey Henninger & Reyann Cheatham

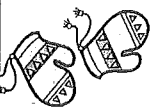
**FEBRUARY 28, 2016**

The Third Sunday in Lent

Sunday School Superintendent-  
Sunday School Pianist-  
Greeters-  
Acolytes-

Larry Gessner  
Lois Watson  
The Craig Shade Family  
Kinsley & Ashton Schreffler

# February 2016



ST. JOHN'S EVANGELICAL  
LUTHERAN CHURCH

Sun	Mon	Tue	Wed	Thu	Fri	Sat
<p><b>7 The Transfiguration of Our Lord</b> 9:00 Sunday School 9:00 Confirmation Class 10:15 Liturgy of Holy Communion with Scout Sunday Flag Ceremony Led by Our Cub Scout Pack 86 11:15 Annual "Souper Bowl" Collection 11:30 Annual Sweetheart Banquet 5:00-6:30 Cub Scout Den Meeting</p>	<p><b>1</b> 7:30 Dartsball Match— St Christopher @ St. John's</p>	<p><b>2 The Presentation of Our Lord</b> 10:00 Pastor Tom at Conf. Pastors Mtg. 7:30 St. Choir Rehearsal Groundhog Day</p>	<p><b>3</b> 9:00 Blanket Making for LWR 6:30 Midweek Bible Study Mtg.</p>	<p><b>4</b></p>	<p><b>5</b> 6:30—8:30 Cub Scout Den Meeting</p>	<p><b>6</b> Pastor Tom's Day Off</p>
<p><b>14 The First Sunday in Lent</b> 9:00 Sunday School 9:00 Youth Leading Worship Gather to Prepare 10:15 Liturgy of Word with Children's Church (led by Youth Group) <i>Fair Trade Coffee and Tea will follow worship</i> 12:00 Book Discussion Group 2:00 Women's Group Meeting 4:00 Congregational Council Meeting Valentine's Day</p>	<p><b>15</b> Pastor Tom Taking monthly Extra Day Off 7:30 Dartsball Match— Faith United Methodist at St. John</p>	<p><b>9 Day of Prayer for Peace with Justice, Beginning in the Middle East</b> 10:00 Pastor Tom at Conf. Pastors Mtg. 6:15 Sunday School Teachers &amp; Officers Mtg. 7:30 St. Choir Rehearsal Shrove Tuesday</p>	<p><b>10 Ash Wednesday</b> 9:00 Blanket Making for LWR 7:00 Liturgy of Holy Communion, with Optional Imposition of Ashes</p>	<p><b>11</b></p>	<p><b>12</b> Lincoln's Birthday</p>	<p><b>13</b> 7:00 a.m. Men's Prayer Group</p>
<p><b>21 The Second Sunday in Lent</b> 9:00 Sunday School 9:00 Confirmation Class 10:15 Liturgy of the Word 5:00-6:30 Cub Scout Den Meeting</p>	<p><b>22</b> Pastor Tom's Day Off 7:30 Dartsball Match— Lykens United Methodist at St. Johns Washington's Birthday</p>	<p><b>16</b> 10:00 Pastor Tom at Conf. Pastors Meeting 7:30 St. Choir Rehearsal</p>	<p><b>17</b> 9:00 Blanket Making for LWR 6:15 Community Lenten Supper &amp; Worship At St. Johns</p>	<p><b>18</b></p>	<p><b>19</b> 6:00 Rehearsal for Maurer/Dietrich Wedding</p>	<p><b>20</b> 2:00 Marriage of Blake Maurer &amp; Sarah Dietrich</p>
<p><b>28 The Third Sunday in Lent</b> 9:00 Sunday School 10:15 Liturgy of the Word Afternoon/Evening -Youth Group Outing to Ski Round Top for Skiing/Snow Boarding</p>	<p><b>29</b> 7:30 Dartsball Match— Messiah Lutheran at St. John</p>	<p><b>23</b> 10:00 Pastor Tom at Conf. Pastors Meeting 6:15 Property Comm. Mtg. 7:30 Senior Choir Rehearsal</p>	<p><b>24</b> 9:00 Blanket Making 6:15 Community Lenten Supper &amp; Worship at Trinity United Methodist Elizabethtown</p>	<p><b>25</b></p>	<p><b>26</b></p>	<p><b>27</b> Pastor Tom's Day Off</p>



**St John Evangelical Lutheran Church**  
**Congregational Council Minutes**  
**November 8, 2015**

The council meeting was called to order by President, Roy Henry

Pastor Tom opened the meeting with a prayer.

**Present:** Roy Henry, Lorraine Henninger, Jeff Lehman, Gail Billow, Ken Koller, Sandra Lamenza, Tamara Spicher, Sandra Shade, Cheryl Shadle and Pastor Tom Bruner

**Excused Absence:** Joseph Doyle, Dale Hassinger

**Minutes:** Motion by Sandra Shade and seconded by Cheryl Shadle to approve the minutes from the October 18, 2015 meeting. Motion approved unanimously.

**Reception of Petitions and Communications:** A request was made by Cub Scout Pack 86 to use our social hall facilities for their meetings on the 1st and 3<sup>rd</sup> Sundays of the month from 5PM to 7PM. A motion to allow the Cub Scouts to use the facility was made by Sandra Lamenza and seconded by Lorraine Henninger. The motion approved unanimously.

**Pastor's Report:** Motion made by Ken Koller and seconded by Gail Billow to accept the pastor's report. Motion approved unanimously.

**Treasurers' Reports:** Motion made by Sandra Lamenza and seconded by Ken Koller to accept the treasurer reports. Motion approved unanimously.

**Reports of Standing Committees:**

**Church Property:** The work being done at the sexton's house was reviewed. The repair requiring access to the elevator shaft has been completed. The carpet in the Sunday School Room has been cleaned. The steeple roof was repaired. New globes for the chandeliers are being researched and will be ordered.

**Finance:** The 2016 budget was reviewed. A motion to accept the budget was made by Lorraine Henninger and seconded by Sandra Lamenza. The motion was approved unanimously.

**Worship and Music:** No report

**Christian Education:** No report

**Stewardship:** No report

**Youth Ministry:** No report

**Mutual Ministry:** No report

**Executive:** No report.

**Nominating:** The committee has completed their list of nominees for the council years 2016, 2017 and 2018. They include Jamie Doyle, Carl Baumgardner, Jeff Buffington, and Karen Paulman. Sandra Shade, Ken Koller, Eric Mattern, and Cheryl Shadle will be leaving council at the end of 2015.

*History:* No report

*Green Team:* No report

**Next Council Meeting:** December 13, 2015 at 4:00PM

**Adjournment:** Motion by Ken Koller and seconded by Cheryl Shadle to adjourn the meeting. Motion approved unanimously.

Respectfully submitted,

Sandra Lamenza



Secretary

### Treasurer Reports

October 2015

	Prior Balance	Receipts	Expenses	EOM
Current	14,229.63	11,179.65	10,978.06	14,431.22
Benevolence	54.80	3782.48	3782.43	54.85
Memorial	46,083.59	12.89	6500.00	39,596.48
Improvement	7871.63	277.00	333.40	7815.23
Bicent Ck Acct	28,862.55	1.72	.00	29,864.27
Bicent Svngs	5,300.91			5,300.91
Flower	310.71	90.00	120.00	280.71

**St John Evangelical Lutheran Church  
Congregational Council Minutes  
December 13, 2015**

The council meeting was called to order by President, Roy Henry

Pastor Tom opened the meeting with devotions and a prayer.

**Present:** Roy Henry, Lorraine Henninger, Jeff Lehman, Joseph Doyle, Dale Hassinger, Ken Koller, Sandra Lamenza, Tamara Spicher, Sandra Shade, Cheryl Shadle and Pastor Tom Bruner

**Excused Absence:** Gail Billow

**Minutes:** Motion by Lorraine Henninger and seconded by Tamara Spicher to approve the minutes from the November 8, 2015 meeting. Motion approved unanimously.

**Reception of Petitions and Communications:** A request was made by Cub Scout Pack 86 for financial assistance for their \$940.00 re-chartering expense. A motion was made by Jeff Lehman and seconded by Ken Koller to pay the full amount. The motion approved unanimously.

Mike Hubler requested an opportunity to speak to council about the local poverty and hunger program currently being administered by our church. It was agreed that he should make a presentation at the February council meeting.

**Pastor's Report:** Motion made by Cheryl Shadle and seconded by Ken Koller to accept the pastor's report. Motion approved unanimously.

**Treasurers' Reports:** Motion made by Joseph Doyle and seconded by Tammy Spicher to accept the treasurer reports. Motion approved unanimously.

**Reports of Standing Committees:**

**Church Property:** The work being done at the sexton's house continues. All the appropriate winterizing measures are either completed or on schedule to be done.

**Finance:** No report

**Worship and Music:** A funeral checklist was developed to assist us when the pastor is away. The committee discussed adding a new setting to the liturgy.

**Christian Education:** Discussed options for Walk in the Woods. They are considering T&D Cats of the World.

**Stewardship:** No report

**Youth Ministry:** No report

**Mutual Ministry:** No report

**Executive:** No report.

**Nominating:** No report.

*History:* No report

*Green Team:* No report

*Other Reports:* Advertising for the Children's Youth Coordinator position has begun. They will meet in January to review candidates.

The Pavilion project is moving along. The cooler has been delivered, and the construction will begin early in 2016.

**Next Council Meeting:** January 10, 2016 at 4:00PM

**Adjournment:** Motion by Dale Hassinger and seconded by Cheryl Shadle to adjourn the meeting. Motion approved unanimously.

Respectfully submitted,

Sandra Lamenza



Secretary

**Treasurer Reports**  
**October 2015**

	<b>Prior Balance</b>	<b>Receipts</b>	<b>Expenses</b>	<b>EOM</b>
Current	14,431.22	13,459.31	10,911.58	16,978.95
Benevolence	54.85	1883.12	1882.95	55.02
Memorial	39,596.48		7200.00	32,366.48
Improvement	7815.23	600.00	288.00	8127.23
Bicent Ck Acct	29,864.27	1.78	300.00	29,566.05
Bicent Svngs	5,300.91			5,300.91
Flower	280.71	151.50	185.00	247.21

*St. John's Evangelical Lutheran Church*

**PARISH STAFF**

The Rev. Thomas Bruner, Jr., Pastor [stjohnhillchurch@frontier.com](mailto:stjohnhillchurch@frontier.com).....362-9519 (O)  
362-7895 (H)  
Tammy & Bill Becker, Sextons (no email).....319-0703  
Judith Ferree, Organist [jjferree@epix.net](mailto:jjferree@epix.net).....362-4228  
Sandra Paul, Secretary [rbpaul@epix.net](mailto:rbpaul@epix.net) .....362-4117  
Roy Henry, Council President [webmaster@randrhenry.com](mailto:webmaster@randrhenry.com)..... 579-0244  
Lorraine Henninger, Prayer Chain Coordinator (no email)..... 362-9108

**Find Us on Facebook**

**PARISH WEBSITE:** [www.stjohnhillchurch.org](http://www.stjohnhillchurch.org)

Physical Address (for deliveries): 215 St. John Road Elizabethville, PA 17023

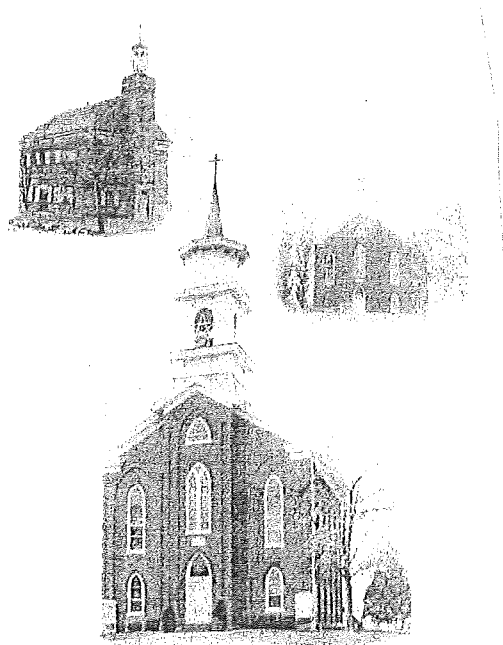
Mailing Address: P. O. Box 270 Berrysburg, PA 17005

\* \* \* \* \*

Pastor's Office Hours:           Monday       8:00 A.M. – 9:30 A.M.  
  Tuesday      8:00 A.M. – 9:30 A.M.  
  Wednesday  8:00 A.M. – 12:00 Noon  
  Thursday    8:00 A.M. – 12:00 Noon  
  Friday       8:00 A.M. – 9:30 A.M.  
  (Other times by appointment)

**OUR MISSION**

*St. John congregation, responding to the call of the Holy Spirit through the Gospel, unites together to preach and teach the Word, administer the sacraments, and carry out God's mission. With God's guidance and grace, we strive to boldly proclaim by word and action the reconciling Gospel of Jesus: Working together for justice and peace, and caring for those in need in our community and world. We invite everyone to join us wherever you are on your faith journey.*



St. John's Evangelical Lutheran Church  
Berrysburg, Pennsylvania  
1780-2005

